



ARTESANÍA AUDIO

the high end rack company

CATALOGUE

[www.artesaniaaudio.com](http://www.artesaniaaudio.com)

[info@artesaniaaudio.com](mailto:info@artesaniaaudio.com)

## **EXOTERYC RACK**

## **PRESTIGE RACK**

## **AUDIOVIDEO RACK**

## **RACK MASTER KYO**

## **ACCESSORIES RACK**

Platforms

Speakers Feet

Electronics Feet

Decoupling discs

Floor platforms

Dampers



ARTESANÍA AUDIO

the high end rack company



## EXOTERYC RACK

[www.artesaniaaudio.com](http://www.artesaniaaudio.com)

[info@artesaniaaudio.com](mailto:info@artesaniaaudio.com)



## Technical Specifications

EXOTERYC RACK WEIGHT		
MODEL	kg	lb
3 levels	50	110
4 levels	62	137
3+3 levels tandem	84	185

INTERNAL STRUCTURE WEIGHT SUPPORTED		
MODEL	kg	lb
3 levels	170	375
4 levels	200	441
3+3 levels tandem	250	551

PLATFORM WEIGHT SUPPORTED		
PLATFORM MODEL	kg	lb
Treated glass	150	330
Krion	150	330
Server Digital	60	132

WEIGHT SUPPORTED RACK + PLATFORM (Glass & Krion)		
MODEL	kg	lb
3 levels	320	704
4 levels	350	770
3+3 levels tandem	400	880

DIMENSIONS	3 LEVELS	4 LEVELS	3+3 LEVELS TANDEM
Total height	73 cm / 28,74"	98 cm / 38,58"	73 cm / 28,74"
Internal distance between legs	55 cm / 21,65"	55 cm / 21,65"	55 cm / 21,65"
External distance between legs	67 cm / 26,37"	67 cm / 26,3	128 cm / 50,39"
Total depth	52,5 cm / 20,66"	52,5 cm / 20,66"	52,5 cm / 20,66"
Net space between tiers	46 cm / 18,11"	63 cm / 24,80"	92 cm (2 x 46 cm) 36,22" (2 x 18,11")
Usable depth	Adaptable on depth		

## Technical Construction Details

### 1 PLATFORM

A stainless steel, anti-magnetic structure supports a specially treated base to set up a turntable or other components. Different versions and materials are available. Check **accessories brochure**.



### 2 STAINLESS STEEL TOP ATTACHMENTS ON RACK UPRIGHTS

Each top is made with **conical recess** to support the spikes of the turntable platform.

### 3 EXTERNAL STRUCTURE

It's made of metal filled with special particles and elastomers. The uprights have a **diameter of 60 mm**. These factors create a **rack heavy, resistant and stable**. The resonance coefficient of the structure is significantly lowered. The paint used is textured for diffusion purposes.

### 4 INTERNAL SUSPENDED STRUCTURE

Isolated from external structure. **Eliminates vibrations** that are transmitted from solid and acoustic sources through the creation of decouples; steel needles supported on isolating discs. These provide extra tiers of **anti-resonant protection**. This suspended audio rack has a **triple decoupling**.

### 5 TEFLON CILINDERS

Support the internal structure and isolates from the external structure. (**Diameter 38 mm**)



### 6 EARTH TERMINAL

To connect electronics (essential for phono) Check manual to connect properly if is necessary.



### 7 BRIDGE BAR

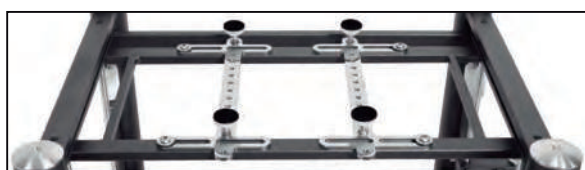
Height variable rear rods strengthen the external structure to guarantee stability and ensure **free easy access to install components**.

### 8 INTERNAL FRAME

These frames are adjustable in height to place any size of component properly. They are locked on the vertical stainless steel bars of the suspended structure.

### 9 LINEAR ARMS

Arms made from anti-magnetic stainless steel. The arms hold adjustable spikes (can be located in different positions) also support isolating discs and damping pads. **Total flexibility in different positions and easy to change.**



This system allows to set up the best support position to place electronic components.

### 10 ISOLATION DISCS

Support each of the electronic components (without any need for shelves). Easy installation facilitated by an elastic insert which provides stability to place electronic components on the adjustable spikes.



### 11 STABILIZER BAR

Located in the internal structure they stop the tiniest pendular movement of the internal structure. Four in each rack, located at the lowest part of the internal structure. Check manual to use it properly.



### 12 DECOUPLING BASE

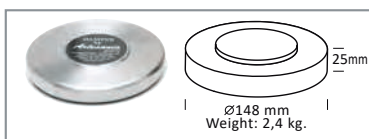
Stainless steel discs support the spikes of the uprights. Two types of floor pads are included, with different sonic behavior, depending on the room acoustics. **Check manual to use the proper pads for the bases.**



## Accessories included

#### Dampers.

Special **anti-magnetic & anti-vibration** damper improved 2,4 kg. to avoid parasitic vibrations.



#### Damping pads.

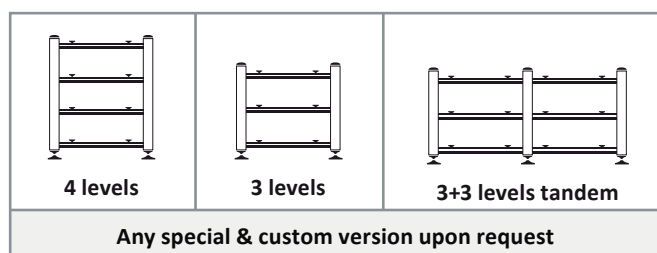
Includes **neoprene** and white **teflon** discs to use depending on room acoustics treatment.

#### Isolation discs.

Includes **neoprene** and white **teflon** discs to use depending on room acoustics treatment.

Check accessories catalog for more options.

## Versions



Any special & custom version upon request



All racks are supplied 95% assembled





ARTESANÍA AUDIO

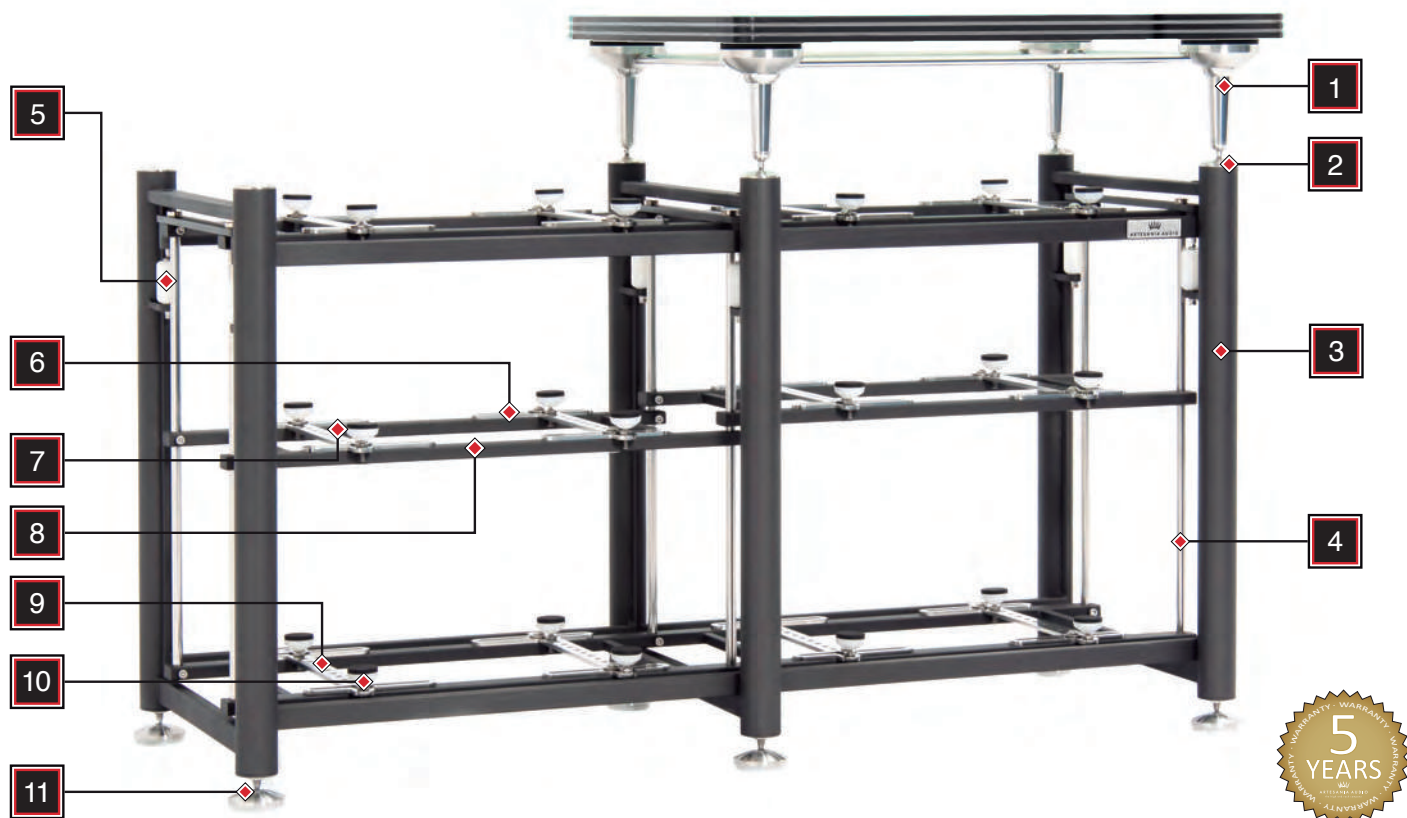
the high end rack company



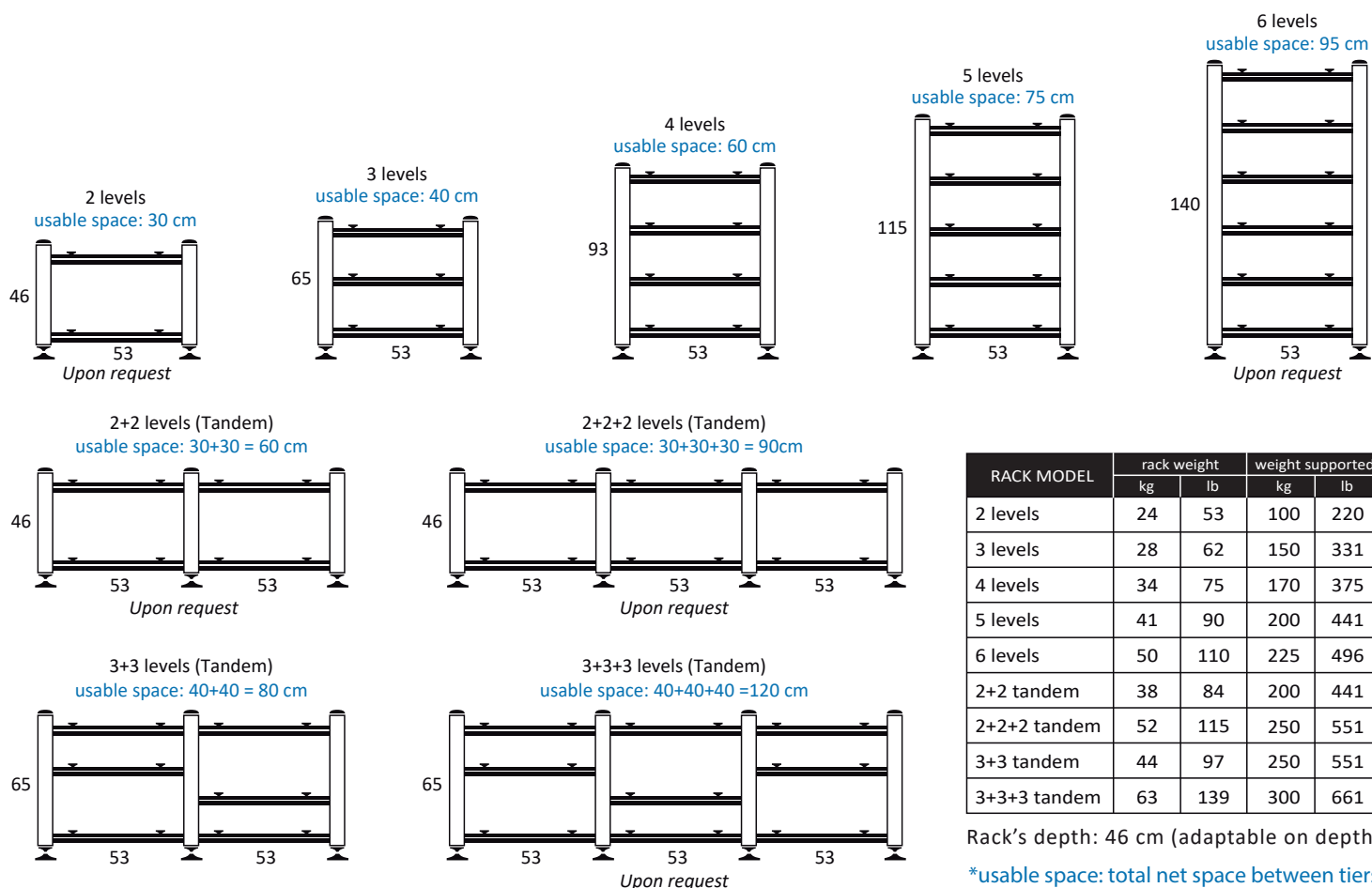
## PRESTIGE RACK

[www.artesaniaaudio.com](http://www.artesaniaaudio.com)

[info@artesaniaaudio.com](mailto:info@artesaniaaudio.com)



## Versions



## Technical Construction Details

### 1 PLATFORM

A **stainless steel, anti-magnetic** structure supports a specially treated base to set up a turntable or other components. Different versions and materials are available. Check **Accessories brochure**.

### 2 STAINLESS STEEL TOP ATTACHMENTS ON RACK UPRIGHTS

Each top is made with **conical recess** to support the spikes of the turntable platform.

### 3 EXTERNAL STRUCTURE

It's made of metal filled with special particles and elastomers. The uprights have a **diameter of 45 mm**. These factors create a rack heavy, resistant and stable. The resonance coefficient of the structure is significantly lowered. The paint used is textured for diffusion purposes.

### 4 INTERNAL SUSPENDED STRUCTURE

Isolated from external structure. **Eliminates vibrations** that are transmitted from solid and acoustic sources through the creation of decouples; steel needles supported on isolating discs. These provide extra tiers of **anti-resonant protection**. This suspended audiorack has a **triple decoupling**.

### 5 TEFLON CILINDERS

Support the internal structure and isolates from the external structure. (**Diameter 30 mm**)



### 6 EARTH TERMINAL

To connect electronics (essential for phono) Check manual to connect properly if is necessary.



### 7 BRIDGE BAR

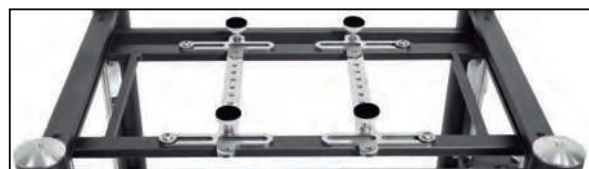
Height variable rear rods strengthen the external structure to guarantee stability and ensure **free easy access to install components**.

### 8 INTERNAL FRAME

These frames are **adjustable in height** to place any size of component properly. They are locked on the vertical stainless steel bars of the suspended structure.

### 9 LINEAR ARMS

Arms made from anti-magnetic stainless steel. The arms hold adjustable spikes (can be located in different positions) also support isolating discs and damping pads. **Total flexibility in different positions and easy to change.**



This system allows to set up the best support position to place electronic components.

### 10 ISOLATION DISCS & DAMPING PADS

Support the electronic components (without any need for shelves). Easy installation facilitated by an elastic insert which provides **stability** to place electronic components on the adjustable spikes.



### 11 DECOUPLING BASE

Stainless steel discs support the spikes of the uprights. Two types of floor pads are included, with different sonic behavior, depending on the room acoustics. **Check manual to use the proper pads for the bases.**



## Accessories included

### Dampers.

Special anti-magnetic & anti-vibration damper **STANDARD 1,4 kg.** in each level for each electronic component. Avoid parasitic vibrations and radio frequency interference in digital systems.



## Optional accessories (check accessories catalog for more options)



Glass shelf



Floor platform



Turntable platform







ARTESANÍA AUDIO

the high end rack company



## AUDIOVIDEO RACK

[www.artesaniaaudio.com](http://www.artesaniaaudio.com)

[info@artesaniaaudio.com](mailto:info@artesaniaaudio.com)



## Technical Construction Details

- 1 • ADJUSTABLE HEIGHT**  
Guide to vary de high of the shelves. The shelf is a double sandwich glass of 6mm each with a special treatment in between.



- 2 • NEOPRENE PADS**  
Conical neoprene needles to isolate from vibrations and obtain a better performance in the listening experience.



- 3 • DECOUPLING BASE**  
Polyamide discs maximum absorption to avoid vibrations transmitted via soil.

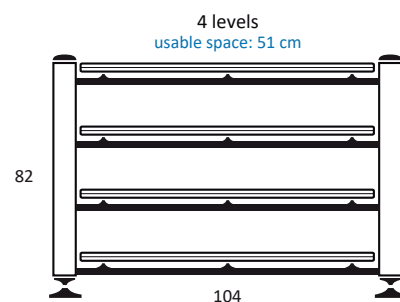
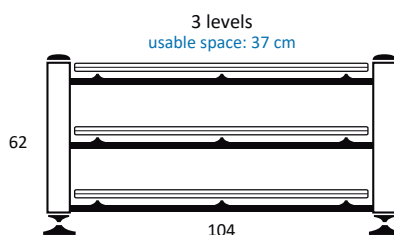
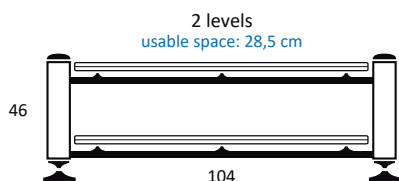


RACK MODEL	rack weight		weight supported	
	kg	lb	kg	lb
2 levels	57	126	160	353
3 levels	79	174	240	529
4 levels	106	234	320	705

Rack's depth: 48 cm (adaptable on depth)



## Versions



Any special & custom version upon request



All racks are shipped 95% assembled



ARTESANÍA AUDIO

the high end rack company



**RACK MASTER KYO**

[www.artesaniaaudio.com](http://www.artesaniaaudio.com)

[info@artesaniaaudio.com](mailto:info@artesaniaaudio.com)

## Technology



**SDS**  
Suspended Double Structure tech



**3D**  
Triple Decoupling



**AAT**  
Acoustic Anti-ressonance Treatment

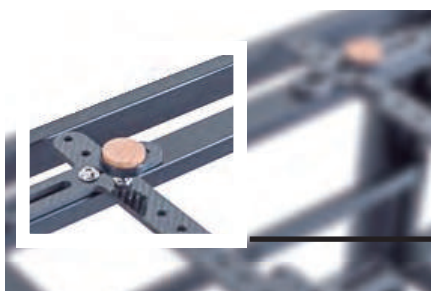
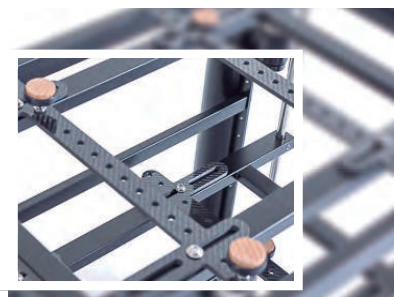


**MNS**  
Maximum Neutrality System



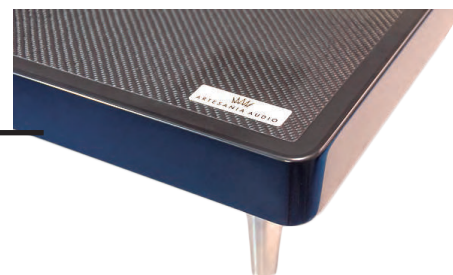
ADJUSTABLE TEFLON CILINDERS UPGRADE

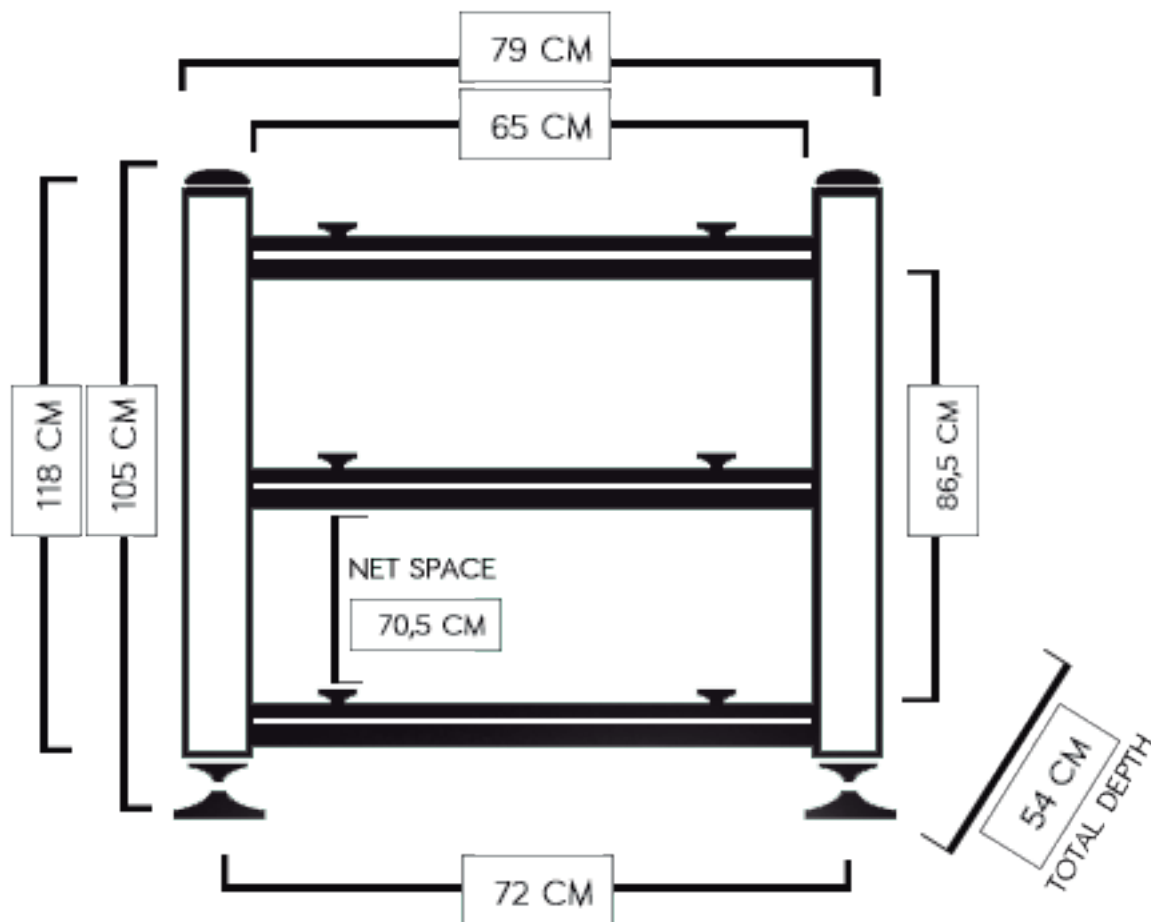
CARBON FIBER ARMS UPGRADE



BEECH WOOD ISOLATION DISC

CARBON FIBER / KEVLAR / KRION MULTILAYER PLATFORM





## Technical Specifications

RACK MASTER WEIGHT		
MODEL	kg	lb
3 levels	73	161
4 levels	92	203
3+3 levels tandem	128	283

INTERNAL STRUCTURE WEIGHT SUPPORTED		
MODEL	kg	lb
3 levels	450	992
4 levels	600	1323
3+3 levels tandem	900	1984

PLATFORM WEIGHT SUPPORTED		
PLATFORM MODEL	kg	lb
Krion / Carbon / Kevlar	200	441

WEIGHT SUPPORTED RACK + PLATTFORM		
MODEL	kg	lb
3 levels	650	1433
4 levels	800	1764
3+3 levels tandem	1100	2425





ARTESANÍA AUDIO

the high end rack company

Platforms

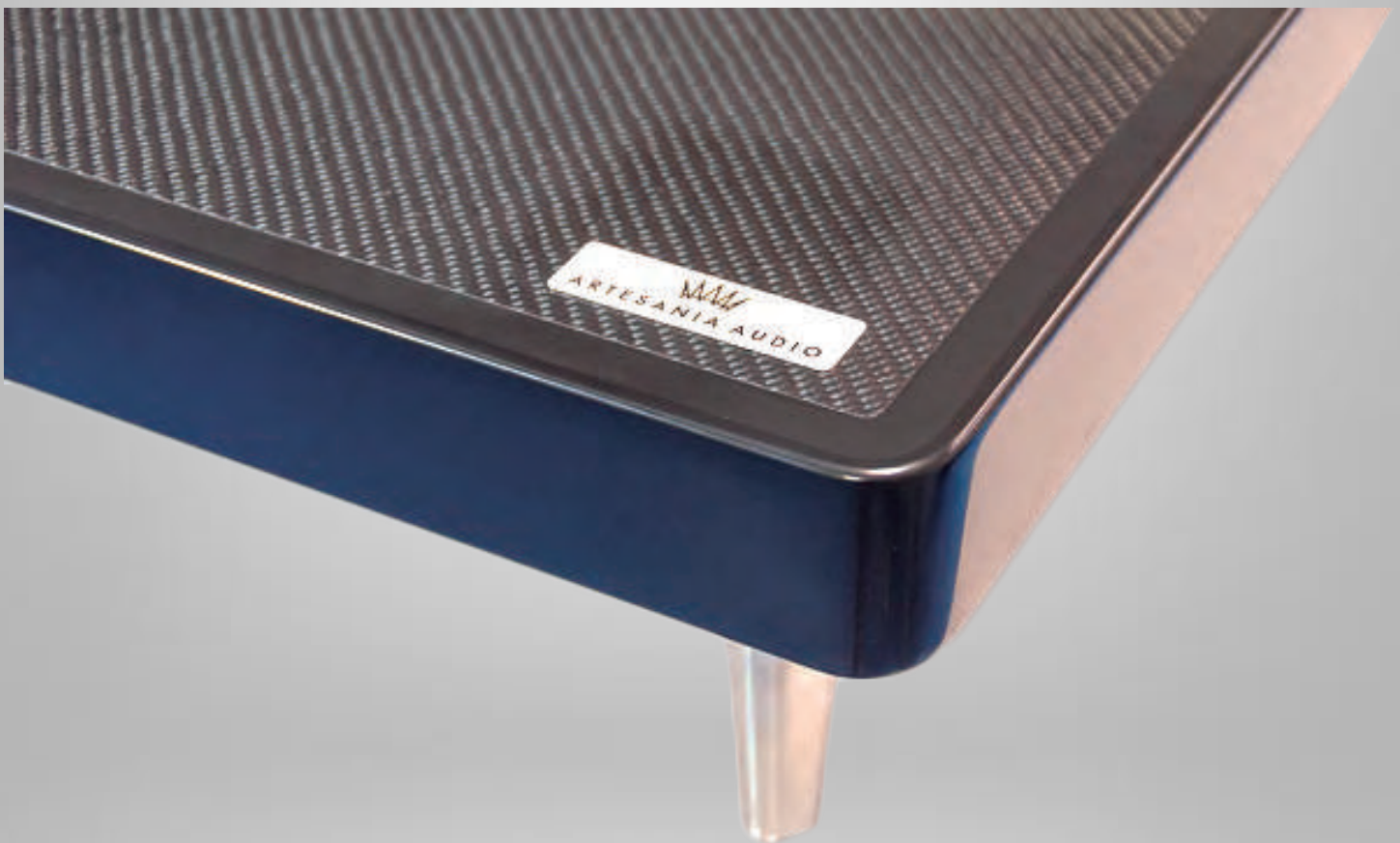
Speakers Feet

Electronics Feet

Decoupling discs

Floor platforms

Dampers

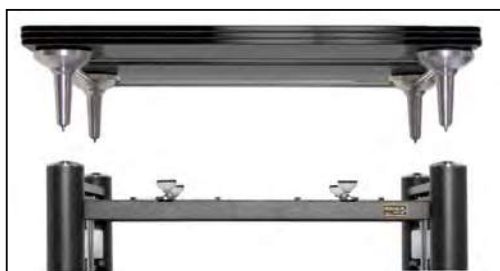


## ACCESSORIES RACK

[www.artesaniaaudio.com](http://www.artesaniaaudio.com)

[info@artesaniaaudio.com](mailto:info@artesaniaaudio.com)

## PLATFORMS

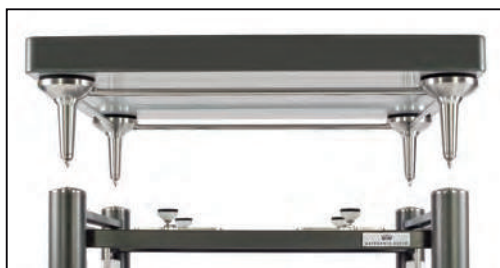
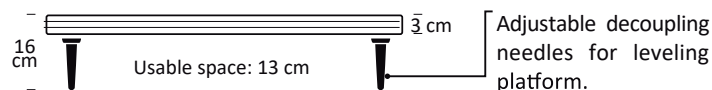


### SPECIAL TREATED BLACK GLASS PLATFORM

**Exoteryc** version dimensions: **74,5 x 60 cm** (supports **200 kg**)

**Prestige** version dimensions: **70 x 55 cm** (supports **200 kg**)

**Stainless steel anti-magnetic structure** supports a specially treated base to set up a turntable or other components.

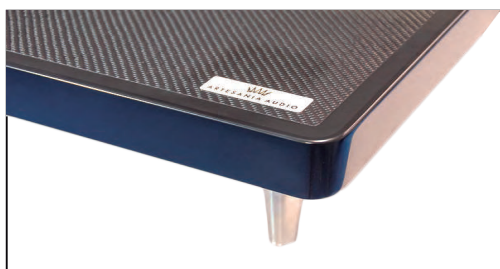


### KRION PLATFORM

Available only for Exoteryc Rack (Black color and bicolor grey).

Dimensions: **74,5 x 60 cm** (supports **200 kg**)

It's made of **two-thirds natural minerals** (ATH-Aluminium trihydride) and a low percentage of **high resistance resins**.



### CARBON / KEVLAR / KRION MULTILAYER PLATFORM

Available only for Master Rack also floor platform version.

Dimensions: **85 x 67,5 cm** (supports **200 kg**)

It's made of Carbon, Kevlar, Krion and MDF multilayer damping material.



## FLOOR PLATFORMS

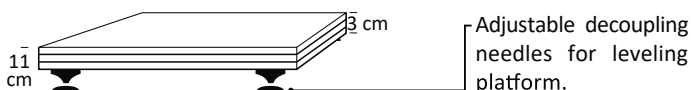


### ELECTRONIC PLATFORM

Available in 2 versions: **74,5 x 60 cm / 70 x 55 cm**

(each model supports **200 kg**). *\*Special versions upon request.*

Maintains structural resonance point below 6,5 c/s. Damping pads included. Neoprene and teflon depending on room acoustics.



## GLASS SHELVES

### SHELVES

While other companies search for solid materials with good anti-vibrational response, Artesania Audio has developed **racks without shelves and totally isolated**. The result is that the electronics generate sound behaviors as were initially preconceived. The materials used have natural high frequencies. The combination with the cushioning material achieves the resonance amplitude is very low, even with very high dynamic range (90 db). **The shelves are supported by polyamide insulating discs and pads neoprene maximum absorption and blocking features** (preventing possible movements of horizontal traslation). **The discs are supported on adjustable steel needles, located on the metal racks** (to decrease transmission). We placed four needles support because the mass of the equipment is not uniform.

Regardless of this fact, in case that for aesthetic reasons or the electronics measuring less than 11 cm wide, our company has shelves as well.

Types of shelves:



**TREATED GLASS SHELVES** available for EXOTERYC, PRESTIGE and IMPROVED racks.

**KRION SHELVES** available only for EXOTERYC racks.

## DAMPERS

Dampers are **anti-magnetic and shock absorbing masses** that act **against vibrations** generated in electronic components. These could be from power sources (transformers) and could also be a consequence of the ondulatory movement of sound as it bounces back off the furniture and cabinets housing electronic equipment. These air-borne vibrations cause interference and background noise that are detrimental to the listening experience.

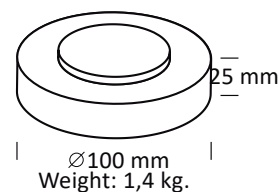
With digital reader sources, dampers act as "armour" against radiofrequency signals and other types of waves, and consequently reduce vibrations. When dampers are installed in all electronic components of a sound system, **clearer and more defined sounds are achieved across all frequencies.**

The anti-vibration action of the dampers is equally effective with any other kind of unit from our range.

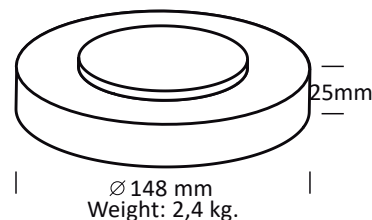
Dampers provide an extra control across the whole passband. They should be considered as the final touch in **achieving clarity, tone and coherence in sound reproduction** on room acoustics.



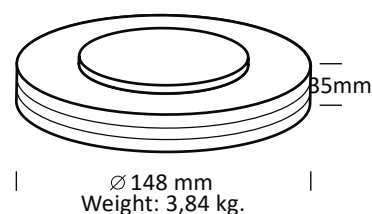
**STANDARD damper**



**IMPROVED damper**



**MK-III damper**



## DECOUPLING DISCS

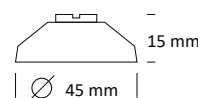
The objective in our products is absolute **neutrality in sound reproduction.** To obtain our goal, we have created the DECOUPLING DISCS.

These products **isolate** the Artesanía Audio Racks from **any type of external coming from solid transmission.**

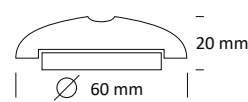
**EXOTERYC BASE and PRESTIGE BASE are coming with damping pads** that could make a difference in the sonic behavior of the racks and overall sound performance of the audio system.



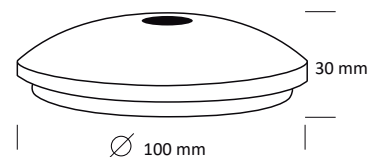
**IMPROVED base**



**PRESTIGE base**



**EXOTERYC base**



Damping pads included on PRESTIGE and EXOTERYC bases.

### White damping pad

Insulating effect, but not absorptive or damping. They don't increase the overall absorption coefficient from the cabinet. (most common used in case the room has been acoustic treated)

### Black damping pad

The black bases are made of neoprene, with absorbent or damped effect. They increase the overall absorption coefficient from the cabinet. (most common used in case the room has not been acoustic treated)



## SPEAKER BASES

---



### Electronic bases

Isolation bases adjustable on height to enhance the sound performance of any audio component (Speakers / Turntables / Electronics...) Exchangeable bases made out of Teflon, Neoprene or Beech wood depending on result desired. Available on different diameters, 100 mm Exoteryc Base / 60mm Prestige Base / 30mm Isolator base.

Bases come with screw-in adapters (must be specified) 4mm / 6mm / 8mm

## ELECTRONIC BASES

---



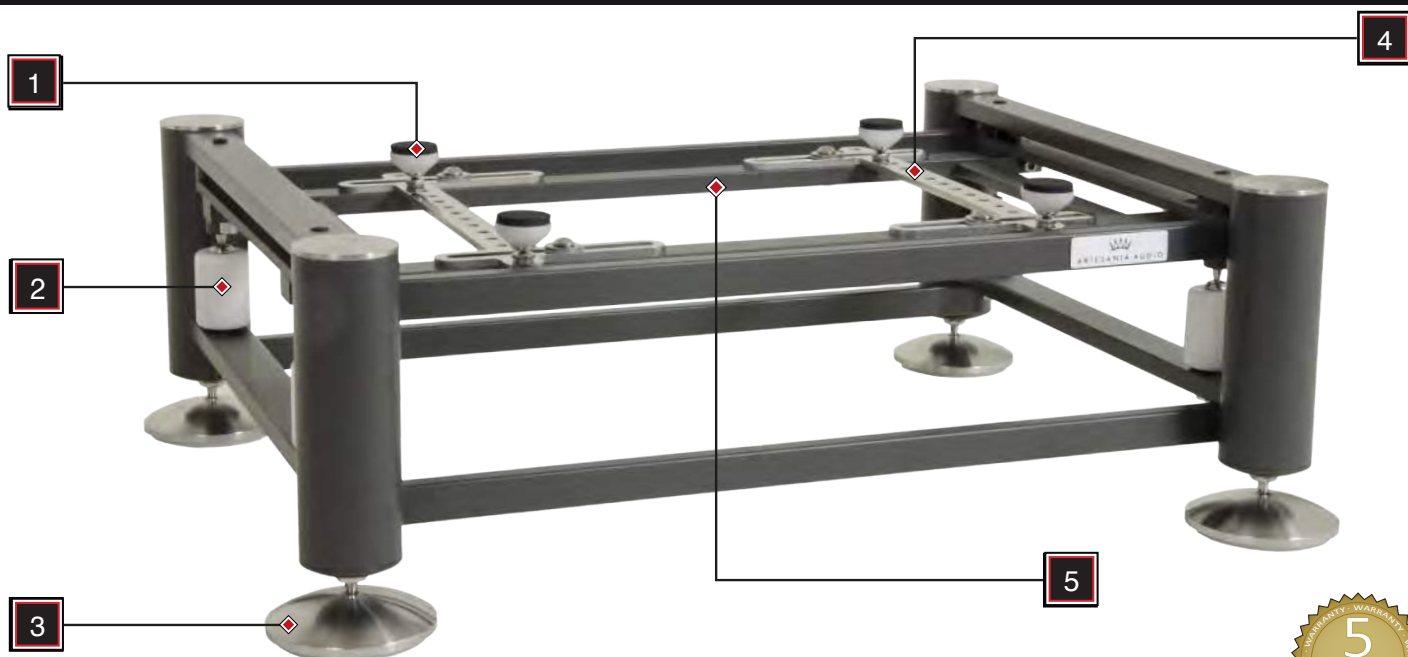
Upgrade for our isolation discs in Beech Wood Support each of the electronic components (without any need for shelves). Easy linstallation facilitated by an elastic insert wich provides stability to place electronic components on the adjustable spikes.

Upgrade for our isolation discs on Exoteryc / Prestige / Aire platform

## UPGRADE PACKING WOODEN BOXES

---





**SDS**  
Suspended Double Structure tech



**3D**  
Triple Decoupling



**AAT**  
Acoustic Anti-ressonance Treatment

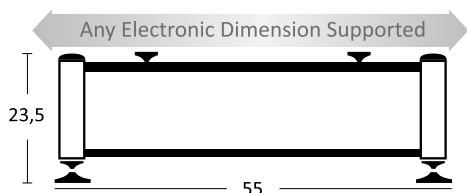


**MNS**  
Maximum Neutrality System

## Technical Construction Details

- 1** • **ISOLATION DISCS**  
Support each of the electronic components (without any need for shelves). Easy installation facilitated by an elastic insert which provides stability to place electronic components on the adjustable spikes.
- 2** • **TEFLON CILINDERS**  
Support the internal structure and isolates from the external structure. **(Diameter 38 mm)**
- 3** • **DECOUPLING BASE**  
Stainless steel discs support the spikes of the uprights. Two types of floor pads are included, with different sonic behavior, depending on the room acoustics.  
**Check manual to use the proper pads for the bases.**
- 4** • **LINEAR ARMS**  
Arms made from anti-magnetic stainless steel. The arms hold adjustable spikes (can be located in different positions) also support isolating discs and damping pads. **Total flexibility in different positions and easy to change.**  
This system allows to set up the best support position to place electronic components.
- 5** • **INTERNAL SUSPENDED STRUCTURE**  
Isolated from external structure. **Eliminates vibrations** that are transmitted from solid and acoustic sources through the creation of decouples; steel needles supported on isolating discs. These provide extra tiers of **anti-resonant protection**. This suspended audio rack has a **triple decoupling**.

## Dimensions and weight



AIRE RACK	rack weight		weight supported	
	kg	lb	kg	lb
Floor platform	19	41	200	440

## Options

3 colors available (Upon request)



Silver



Anthracite



Black

Any special & custom version upon request



All racks are shipped 95% assembled





ARTESANÍA AUDIO

the high end rack company

## REVIEWS

***“ Artesania Audio means exceptional quality and technology ”***  
(ALTA FIDELIDAD, Spain)

***“ Parasitic noise disappears completely and a beautifully clean sound is the result ”***  
(HAUTE FIDÉLITÉ, France)

***“ Artesania racks extract every last drop of potential from the components it supports ”***  
(HAUTE FIDÉLITÉ, France)

***“ The perfect rack? There are no shelves to flap about under your equipment,  
its arguably the best equipment support known ”***  
(HI-FI NEWS, UK)

***“ Artesania Audio wants components to sound like themselves (in mechanical isolation),  
Blue Moon Award for Rack ”***  
(SIXMOONS, Switzerland)

***“ Incredibly neutral, the overall solidity and control of my system,  
Most Wanted Component award ”***  
(STEREO TIMES, USA)

***“ Music Sounded bigger, better recorded, you could hear more into the recording and  
the frequency extremes were as effortless and natural as the mid-band ”***  
(HI-FI +, UK)

***“ The Artesania Rack possesses the ability to improve the overall sonic performance of  
any separate component or system as a whole ”***  
(ENJOY THE MUSIC, USA)

rozando la perfección · touching perfection · 近乎完美 · निकट पूर्णता · الأقرب إلى الكمال · perto da perfeição  
близкое совершенство · 完璧に近い · proche de la perfection · 완벽에 가까운 · Perfektion in der Nähe