

bergmann

Analogue Airbearing Technology

Odin

Linear tracking airbearing tonearm



Strength in the linear tracking tonearm

The linear tracking tonearm tracks the record as it pressed = no tracking error. The benefit is a distortion-free and relaxed reproduction, even at complex passages.

One more important advantage of the airbearing, is the immunity of the tonearm to acoustic feedback, as it has no mechanical contact- the moving part- to the turntable. The only contact is through the stylus tip, and the tonearm wire. These small important details create the intense and life-like reproduction. Timbre, details, and nuances are natural parts of the transparent and vivid acoustic image.

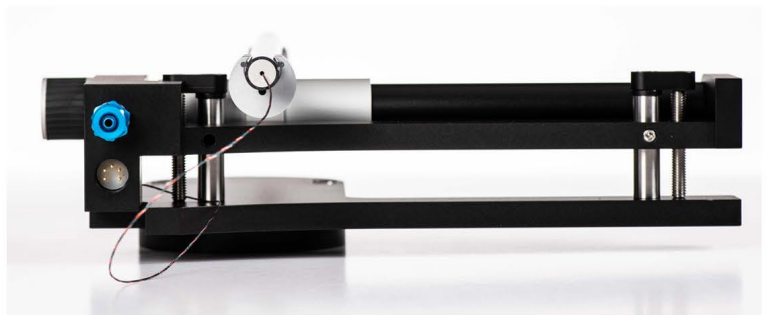
The 3D spaciousness, layering between instruments, and zero tracking error is something traditional tonearms find hard to achieve. In addition, the Thor tonearm is easy to set up!

Design Odin tonearm

In the design and construction of Odin, we stay to our idea of simplicity: As few parts and assemblies as possible, to avoid resonances.

A parameter in the ultimate tonearm design is stiffness and stability in the construction. Both are carefully incorporated in the Odin arm. An example is the airpipe, which is fixed in both ends, to give the floating part the best possible base. The armtube is traditional for Bergmann tonearms- well considered construction in few parts, made as a double tube construction, with damping in between the tubes. This means that the armtube control the vibrations from cartridge and record grooves when handling the musical crescendos.

The tonearm wire is- as usual in Bergmann tonearms- in one piece from cartridge clips to the DIN connector. The DIN connector ensures user flexibility for connection of the preferred interconnect phono cable. Counterweight is decoupled from the arm- again to avoid any resonances.



bergmann

Danish design - produced in Denmark

Odin

Linear tracking airbearing tonearm

Technical specification:

Tonearm:

Linear tracking airbearing tonearm.

Aluminium/carbon.

Armtube damped inside.

Counter weight decoupled from armtube.

Adjustments: VTA, overhang, leveling. Tracking force.

Wire:

Pure copper litz.

Clips:

Gold plated copper.

Connectors:

Gold plated DIN.

Effective mass: 14g.

Weight: Incl. armboard, 1.180g.

Armboard:

Aluminium.

Dimension:

70 x 190 x 265mm (H x W x L)

Finish:

Black/Silver anodized

Black/Black anodized

Black/Gold plated

Airsupply:

Silent, clean, dry and smooth airflow. Replaceable dust filter.

Dimensions:

135 x 155 x 330 (H x W x L)

Weight:

5.7kg.

Thor in the Nordic mythology:

Thor was the most popular of all Gods. Thor was worshiped by most – he was the God of people. He made lightning and thunder as he drove over the clouds in his chariot, swinging with his hammer, Mjølner.

Thor stood for physical strength.

Thor's role was, among, to maintain law and order.



We focus on thoroughly considered simple constructions, made with few parts in solid materials, to avoid unintended resonances and to secure optimum stability.

